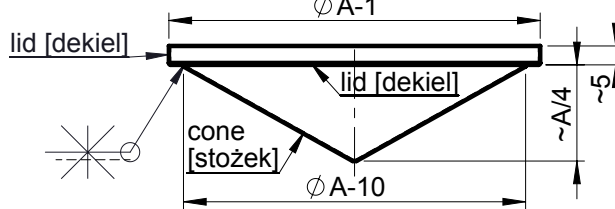
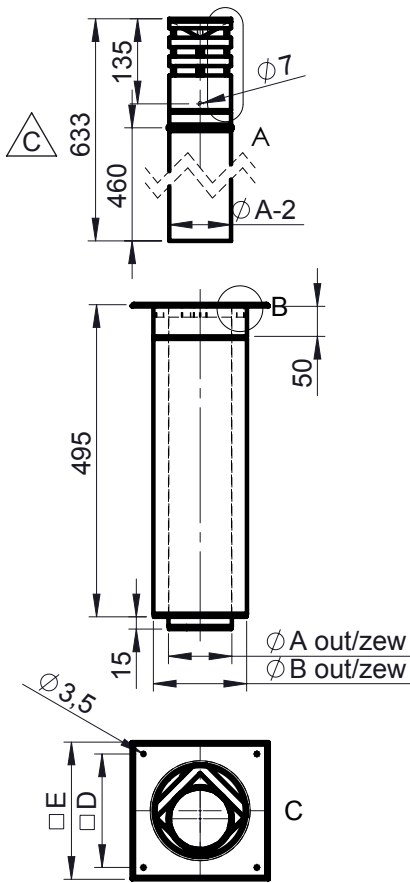
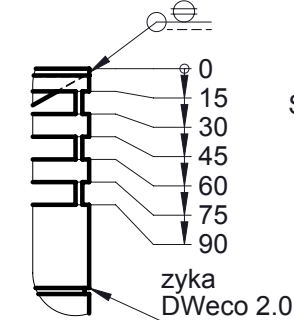


TABLE OF CORRECTIONS (LAST THREE)

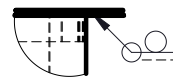
REVISION	CORRECTION	DESCRIPTION	DATE	NAME
1	A	changed surface finishing of 1,3,6 from IIID to IIIC [zmiana wykończenie 1,3,6 z IIID na IIIC]	2013-06-19	K.Stefański
2	B	changed inner coat material from 1.4404IIIC to 1.4301IIIC [zmiana materiału DWI z 1.4404 IIIC na 1.4301 IIIC]	2014-01-08	S.Frank
3	C	changed execution of inner coat ending [zmiana wykonania zakończenie DWI]	2014-01-29	P.Sawikowski



DETAIL A
SCALE 1 : 5



DETAIL B
SCALE 1 : 5



Second plate separately
[Druga płyta luzem]

welding line shifted
to the axis of this
product
[Linia spawu rury ϕB
przesunięta w stosunku
do osi elementu]

line of welding in the axis
[Linia spawu rury ϕA
w osi elementu]

Nit [Rivet]

Nit [Rivet]

Nit [Rivet]

Second plate
[Druga płyta]

replace drawing JG-1693-11
[zastępuje rysunek JG-1693-11]

	100/150	130/200	150/200
A	99,2	129,5	151,8
ϕA	310	405	475
B	148,5	198,9	202,7
ϕB	465	623	635
C	150	200	204
D	210	260	260
E	250	300	300
L	11,5	22	12,5

NO	GEO / DIN / NAV	MATERIAL	THICKNESS	QTY
8		1.4301 IIIC	1,0	1
7		1.4301 IIIC	1,0	1
6		1.4301 IIIC $\triangle A$	0,5	1
5		1.4301 IIIC	0,5	1
4		1.4301 IIIC $\triangle B$	0,5	1
3		1.4301 IIIC $\triangle A$	1,0	1
2		1.4301 IIID	0,5	1
1		1.4301 IIIC $\triangle A$	0,5	1

Jeremias
CHIMNEY SYSTEMS

Material
inside/outside

/

Description

Blow-out pipe horizontal H-TWIN
[Przejęcie przez ścianę H-TWIN]

Weight
kg

Date Name

drawn by 2014-01-28 KST

Code
H-TWIN 681

Format
A4

checked by 2014-01-28 PSA

Production code

checked by

Project

checked by

Drawing no.

214 - 0104 - 03 - 2P

Sheet
1 of 1

All dimensions without tolerances are produced according to Jeremias internal tolerances

All rights reserved

approved by 2014-01-28 JWY

Revision | Type
.....
2P

